



Sponsorship Opportunities

What is Wimba Connect 2009?

Wimba Connect 2009 is Wimba’s second annual global users conference. Wimba Connect enables fellow Wimba users and educators to share and learn about the myriad ways collaborative technologies enhance learning, improve outcomes, and increase student retention. The program will include pre-conference workshops, keynote presentations, and, of course, many end-user presentations.

Why Sponsor Wimba Connect 2009?

Wimba Connect 2009 will be your opportunity to get your message out to hundreds of educators from across the globe, ranging from CTO’s and CIO’s to instructional technologists, and faculty representing almost every discipline. As seen at Wimba Connect 2008, Wimba customers come from a wide-variety of institutions; from Ivy League universities and community colleges to public K-12 schools and virtual schools, our customers represent the entire spectrum of education.

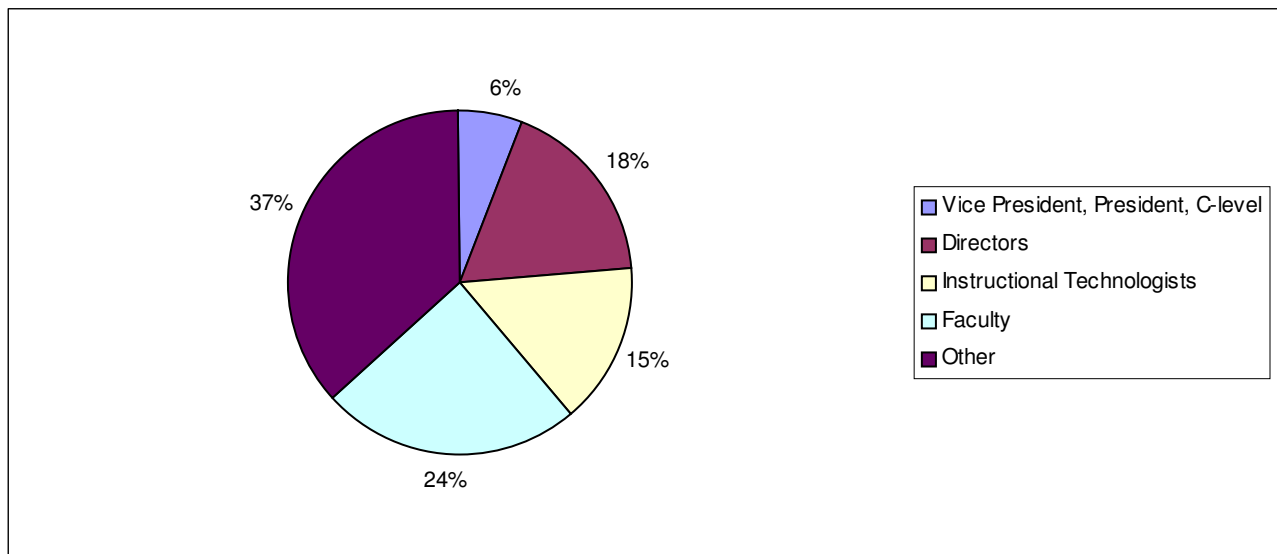
Attendees at Wimba Connect 2008 (by titles)

- Vice President, President, & C-level: 6%
- Directors: 18%
- Instructional Technologists: 15%
- Faculty: 24%
- Other: 37%

What sponsors say about Wimba Connect

“Wimba Connect provided us with an excellent opportunity to connect with customers that use both Wimba and ANGEL, and to meet with new schools and introduce them to ANGEL. I’m sure that Wimba Connect 2009 will be another great conference for ANGEL!”

-Phill Miller, ANGEL Learning



Contact: Sharon LaDay at 646.861.5175 or sladay@wimba.com



Exhibit Hours

Install

Monday April 6, 2009; Hours TBD

Monday April 6, 2009

7:30pm – 9:30pm

Opening reception, dedicated exhibit time

Tuesday April 7, 2009

8:00am – 4:00pm

8:00am – 9:00am Breakfast, dedicated exhibit time

10:50am – 11:30am Break, dedicated exhibit time

12:20pm – 2:00pm Lunch, dedicated exhibit time (table-top at pool deck)

Wednesday April 8, 2009

7:00am – 11:30am

7:00am – 8:00am Breakfast, dedicated exhibit time

10:00am – 10:30am Break, dedicated exhibit time

Tear Down

Wednesday April 8, 2009; 11:30am – 2:00pm

*Times above are subject to change

Exhibitors have their own dedicated exhibit space with (1) 8' table, 2 chairs, carpet, and free electric connections.

Cost for Internet connectivity: TBD

Contact: Sharon LaDay at 646.861.5175 or sladay@wimba.com



Pre-Packaged Sponsorship Options

You have numerous opportunities to sponsor Wimba Connect 2009. Whether you prefer a pre-packaged sponsorship that includes numerous items or if you want to customize your own package, we have many options to best suit your needs.

Regardless of which options you select, your company logo and description will appear on the Wimba Connect 2009 website (<http://www.wimba.com/connect09>).

For questions or comments, please email: Sharon LaDay at sladay@wimba.com

Platinum Sponsorship: \$15,000

- Exclusive Opening Reception Sponsorship (napkins, signage, custom cocktail)
- Two 8' booths – Premium placement
- Exclusive Executive-level wine tasting
- Webcasts sponsor
- Attendee List
- Speaking presentation
- Full-page ad in conference program
- Verbal recognition during keynotes
- Logo on lanyards
- Bag insert
- Participate in sponsor Bingo
- 3 Company registrations

Basic Sponsorship: \$2,500

- 8' booth
- Half-page ad
- Bag insert
- Participate in sponsor Bingo
- 2 company registrations

Gold Sponsorship: \$7,500

- 8' booth
- Conference Badges
- Napkins and Signage at Conference Party
- Custom cocktail at Conference Party
- Attendee List
- Speaking presentation
- Cyber café sponsorship
- Full-page ad
- Participate in sponsor Bingo
- 3 company registrations

Silver Sponsorship: \$5,000

- 8' booth
- Napkins and Signage at Conference Party
- Custom cocktail at Conference Party
- Speaking Presentation
- Attendee List
- Full-page ad
- 2 company registrations

Contact: Sharon LaDay at 646.861.5175 or sladay@wimba.com



A La Carte Sponsorship Options

Tier 1

<p><u>Hotel Key Cards</u> Have your logo on each attendee's hotel key card; the key card they'll be using all conference long.</p>	<p>\$2,500</p>
<p><u>8' Exhibit Space</u> Show your products to hundreds of pre-qualified potential customers. The exhibit hall at Wimba Connect 2009 will feature software and hardware vendors as well as publishers from throughout education. An exhibit table also includes 1 complimentary registration.</p>	<p>\$2,000</p>
<p><u>Webcasts Sponsor</u> Many of the sessions will be recorded via Wimba Classroom and made available after the conference. We will show your logo throughout each webcast. These archived webcasts will be available for years.</p>	<p>\$2,000</p>
<p><u>Attendee List</u> What better way to promote your company than by reaching our attendees via mail or email before the conference? This list will contain all contact information of our attendees (except those who opt-out).</p>	<p>\$2,000</p>
<p><u>Drinks Station</u> Guaranteed to be a busy station, at our evening event you can sponsor our drink bar and even have your own cocktail named after your company.</p>	<p>\$2,000</p>

Tier 2

<p><u>Conference Presentation</u> Give a full presentation to let our users know how your company and products can help their institutions. This presentation will be listed as part of the official program.</p>	<p>\$1,500</p>
<p><u>Conference Notebook and Pen</u> Have your logo on the notebook and pens that every attendee receives in his/her bag.</p>	<p>\$1,500</p>
<p><u>Badge Holders</u> Have your logo appear prominently on each attendee badge holder.</p>	<p>\$1,500</p>

Contact: Sharon LaDay at 646.861.5175 or sladay@wimba.com



<u>Water Bottles</u>	\$1,500
It's hot in Arizona. Keep the attendees cool and hydrated by sponsoring a water bottle with your logo which attendees can fill and refill throughout the conference, and when they return home.	
<u>Conference Bags</u>	\$1,200
Have your logo on our nice conference bags that attendees will surely use after they return to campus. We can only accept five logos – first come, first served.	
<u>Name Badges</u>	\$1,000
Have your logo appear prominently on each attendee badge.	
<u>Breakfast/Lunch Sponsorship</u>	\$1,000
There will be three meals throughout the conference that aren't part of a reception or party. Prominently display your logo at all meals while the attendees dine.	
<u>Room Drops (Tuesday Morning)</u>	\$1,000
Leave a giveaway (brochure, CD, etc.) under the door of each attendee in time for morning of Tuesday, April 7, 2009 sessions. Sponsor supplies the items to be dropped.	
<u>Room Drops (Wednesday Morning)</u>	\$1,000
Leave a giveaway (brochure, CD, etc.) under the door of each attendee in time for morning of Wednesday April 8, 2009 sessions. Sponsor supplies the items to be dropped.	
Tier 3	
<u>Conference Program Full-Page Ad</u>	\$500
Create a full-page ad to talk about how your company can benefit Wimba users.	
<u>Conference Break Sponsorship</u>	\$500
There will be several refreshment breaks throughout the conference. Prominently display your logo at all breaks while the attendees snack and recharge.	
<u>Company Registrations</u>	\$399 (per person)
It's only \$399 per person to attend our conference as a sponsor. *Your company receives one complimentary registration for each 8' exhibit space	
<u>Conference Program Half-Page Ad</u>	\$350
Create a half-page ad to talk about how your company can benefit Wimba users.	

Contact: Sharon LaDay at 646.861.5175 or sladay@wimba.com



Bag Insert

\$250

Include one item such as a brochure, notepad, or a branded flash drive in the bags that each attendee receives for the conference. (You supply the item.)

Keynote Recognitions

\$250

During the general sessions you'll receive special vocal recognition and have your logo displayed in front of the entire audience.

Contact: Sharon LaDay at 646.861.5175 or sladay@wimba.com